



ANNUAL REPORT  
2013

WellFlorida  Council  
.....  
Working Together for Healthy Communities

# WellFlorida Council

## A NONPROFIT FOCUSED ON BUILDING HEALTHY COMMUNITIES

WellFlorida's mission is to forge partnerships in planning, research and service that build healthier communities. Partnerships have included the development of Federally Qualified Health Centers, a regional health information exchange, chronic disease management programs and safety net healthcare services.

## THE PROGRAM MANAGER FOR REGIONAL PROGRAMS AND SPECIAL PROJECTS

WellFlorida provides management services for local, state and federally funded programs, special projects and nonprofits throughout the region that support our mission and the causes we believe in—maternal and infant health, HIV/AIDS care, and improving access to healthcare in rural communities and to the uninsured.

## OUR PROGRAMS

*WellFlorida Affiliate Partners*  
 Central Healthy Start  
 Community Health IT  
 Healthy Start of North Central Florida  
 Housing Opportunities for Persons with AIDS  
 North Central Florida Cancer Control Collaborative  
 Rural Health Partnership  
 Ryan White CARE Program

## SPECIAL PROJECTS

High Impact Prevention  
 Health Insurance Marketplace Navigators  
 North Central Florida Trauma Agency

## A CONSULTANT FOR HEALTH RELATED ISSUES

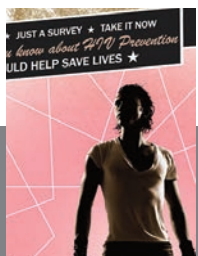
For more than 40 years, WellFlorida has kept local and state health policy decision makers informed, worked with hundreds of community coalitions and provided services to organizations in the public, private and nonprofit sector. Program management and evaluation, needs assessments, grant writing, customized data reports and strategic planning are some of the many consultancy services we provide.

## THE LOCAL HEALTH COUNCIL FOR NORTH CENTRAL FLORIDA

WellFlorida is one of the state's 11 local health councils, a network of nonprofit agencies that conduct regional health planning and implementation activities. Our district includes the following 16 counties: Alachua, Bradford, Citrus, Columbia, Dixie, Gilchrist, Hamilton, Hernando, Lafayette, Lake, Levy, Marion, Putnam, Sumter, Suwannee and Union.

Appointed Jeff Feller as new CEO

Conducted statewide HIV prevention study for FDOH



NCFCC produced new online cancer resource guide and expanded its staff and outreach efforts



The North Central Florida Cancer Report 2013 garnered media attention

Launched *Everyone's Doing It: Stop AIDS Now*



Community Health Assessments and Improvement Plans for Columbia, Dixie, Gilchrist, Marion, Hamilton, Hernando, Putnam and Union Counties



AHCA welcomed CommunityHealth IT to the Florida Health Information Exchange

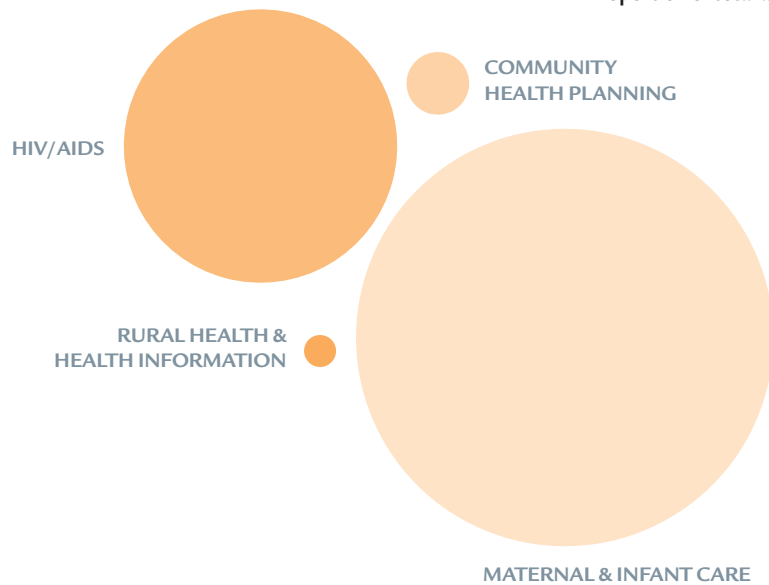


Published *North Central Florida County Health Profiles*

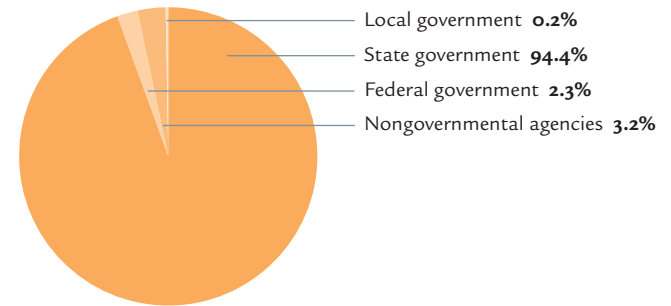


In FY2013, WellFlorida continued to derive the vast majority (94.4%) of its revenue from state government sources, primarily through contracts with the Florida Department of Health and many of its local entities. State government contracts were the predominant sources of revenue, however, more than 51% of state government proceeds originated as federal revenue that was passed through to WellFlorida via the state government. Activities of our affiliate partners such as Ryan White and Healthy Start accounted for nearly 89% of all revenue flow, while slightly more than 11% of revenues were obtained through health planning consultancy, special programs, grants and mandated services. Maternal and Infant Health and HIV/AIDS continued to be the central causes of WellFlorida's operations accounting for nearly 91% of WellFlorida activity.

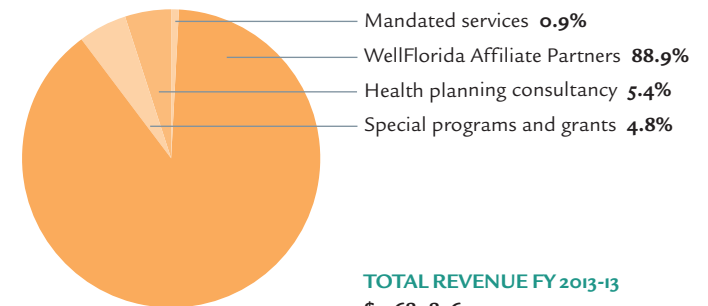
**CAUSES**  
Proportion of total activities



**REVENUE BY FUNDING TYPE**



**REVENUE BY AREA OF FOCUS**



**TOTAL REVENUE FY 2013-13**  
\$9,681,856

Pam Blackmon, Suwannee County, Provider Thomas Cappello, Alachua County, Consumer Jonathan Cherry, Lake County, Provider Jennifer Fitterman, Alachua County,

Consumer Nelson Green, Putnam County, Consumer Jana Hart, Lafayette County, Consumer Rebecca Martin, Citrus County, Consumer Carol Mazzara, Marion County,

Provider Allen Parrish, Bradford County, Provider Mary Ellen Poe, Marion County, Purchaser Anita Riels, Gilchrist County, Provider Eileen Senecal, Levy County,

Consumer Nancy Sult, Hamilton County, Provider Tom Tran, Lake County, Purchaser Suna Uzun, Marion County, Provider Katrina VanAernam, Dixie County,

Consumer Lucy Ann Wines, Citrus County, Provider Sheri L Wyatt, Alachua County, Consumer Cecelia Young, Union County, Provider